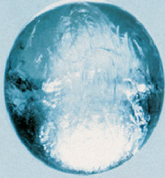




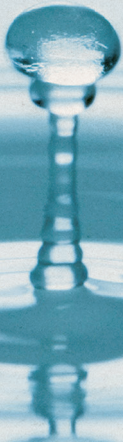
LEAD LIKE JESUS

IMPACT REPORT

2018 IN REVIEW



ONE MINISTRY
ONE MISSION
ONE MESSAGE
MANY AUDIENCES





THE HISTORY OF THE
CITY OF LONDON
FROM THE FOUNDATION
TO THE PRESENT
BY JOHN STOW

TABLE OF CONTENTS

A NOTE FROM PHYLLIS	3
A REFLECTION LOVE OR FEAR: YOU CHOOSE	4
INTERNATIONAL	
ENCOUNTER: LEADERSHIP TRAINING AND DEVELOPMENT	5
COMMUNITY TRANSFORMATION THROUGH CHURCH PLANTER TRAINING	7
MEET TITILOYE, A NEW CHURCH PLANTER	8
INTERNATIONAL EXPANSION IN CHURCH PLANTER TRAINING	9
GLOBAL IMPACT	11
HEART LANGUAGE FOR HEART TRANSFORMATION	13
FORT WORTH: MORE THAN AN EVENT	15
DOMESTIC	16
RESOURCES HIGHLIGHTS	17
OUR VISION AND MISSION	18
SUPPORT OUR MISSION	18

A NOTE FROM PHYLLIS

I am in awe as I think about all God accomplished last year through the support of friends like you. People around the world are learning not only about a different leader role model, but also about the impact of Jesus' love and leadership in their lives.

In the Lord's Prayer, Jesus prays, "Your kingdom come, your will be done, on earth as it is in heaven" (Matthew 6:10). When we come to know, follow, and lead like Jesus, our greatest calling is bringing God's Kingdom to earth.

What would it look like if earth was like heaven? God would reign as King. The fruit of the Spirit would be abundant as we loved one another, lived peaceably together, forgave as we have been forgiven, extended kindness, and so much more.

This is exactly what Jesus intended when He prayed to His Father.

Fill in the blank for your life: _____ as it is in heaven. Maybe it's "in my family" or "in my job." Maybe it's "in my church" or "in my city." Wherever you are, God's desire is for His Kingdom to come to earth through His people.

As you review God at work through this Impact Report, I pray you are encouraged by the many people who have taken up this call around the world. The Kingdom of Heaven is coming to earth and many people are coming to know Jesus, follow Him, and lead as He led!

Thank you for your partnership and commitment to this great work that's only possible through God's blessing and your generosity. We are grateful for all that's been done and all that's to come!

With a grateful heart,



Phyllis Hennecey Hendry

Phyllis Hennecey Hendry
President/CEO

A REFLECTION

LOVE OR FEAR: YOU CHOOSE

At Lead Like Jesus, one of our foundational habits is accepting and abiding in God's unconditional love. Living loved helps us remember not to be afraid. It changes how we see the world and everything in it.

C. S. Lewis is one of my favorite authors. In *The Four Loves*, he wrote, **"I believe in Christianity as I believe the sun has risen, not only because I see it, but because by it, I see everything else."** Perspective. Love and fear are two defining **perspectives** in our lives.

Everything we hear or receive into our lives is filtered through love or fear. Our reactions to situations and even our feedback come from love or fear. Fear tells us we are not enough. Love says we have everything we need.

When Scripture says, "Do not fear," it does not mean, "You go handle this," or "Stop it." God is saying that the grace to have victory over fear is within our reach. His grace empowers us to do what we could never do on our own. When God gives us a command, He gives us all we need to complete it. Grace enables, grace empowers.

In 1 John 4:18-19 we are reminded:

There is no fear in love, but perfect love drives out fear, because fear has to do with punishment. The one who fears is not made perfect in love. We love because He first loved us.

If you are fearful today, it may be that you have forgotten how much you are loved. What would change if you knew you were absolutely loved and had no need to fear? You already are.



INTERNATIONAL

ENCOUNTER: LEADERSHIP TRAINING AND DEVELOPMENT

Political leaders in every country are in key positions to articulate and demonstrate the need for change. Evidence of change starts often in the heart of the leader and is lived out each day through personal decision-making and public policy creation.

In an Encounter training recently held in Barnawa, Kaduna, Nigeria, a group of political leaders had the opportunity to assess their motivation and refocus their priorities. Here is a sampling of what these leaders shared at the end of their experience:

“The Encounter meeting gave us, especially me, the opportunity to know what leading like Jesus is supposed to be, and it has helped strengthen and build me for the leadership roles ahead...The principles that were taught were powerful and lifesaving—which is what we need in the political sphere in our country.”

– Mary Yahaya, APC Stakeholder Chikun LGA, Kaduna State

“The Lead Like Jesus Encounter has so greatly challenged me to continue to be relevant in my generation by following the leadership lifestyle of Jesus as a role model... This was a turning point for me, and I have decided not to be selfish but to always be involved in the well-being of others.”

– Dr. MD Dogari, Former Deputy Speaker of the Kaduna House of Assembly, Kaduna State

“Today remains in my life a remarkable and memorable day. I want to express my gratitude to Lead Like Jesus for granting us the great opportunity to attend this eye-opening and impactful meeting. More of such meetings need to be held for us to have a better nation and citizens in this country—and also disciples of Jesus Christ.”

– Elisha Abashe, PA to Immediate Past Commissioner of Ministry of Sports, Youth, and Culture, Kaduna State

“My heart melted in a way that I knew it was something significant; I pray this will translate into forgiveness, generosity, and compassion. May the spirit of empathy and humility rest on me forever.”

– Samaila Leeman, Present Vice Chair, Chikun LGA, Kaduna State



Nigeria

These leaders in Nigeria have been transformed through the teachings and model of Jesus. Please pray for them as they live out what they have learned. Also, join us in praying that political leaders in other countries will enroll in the Encounter training so they too can begin the journey of Jesus-led leadership in their spheres of influence.

COMMUNITY TRANSFORMATION THROUGH CHURCH PLANTER TRAINING

What is a church planter? Individuals who accept the call to become a church planter commit to 18 months of training led by a Lead Like Jesus Certified Facilitator, often in partnership with other international ministries. Donors to Lead Like Jesus provide financial resources in support of and in partnership with these church planters in Kenya, Ghana, Niger, Nigeria.

Church planters have the unique opportunity to see communities transformed. They bring the truth of Jesus into remote villages by planting a church. A church plant opens doors to local government and schools, spreading the message of Jesus to the far reaches of the community. This allows Lead Like Jesus to impact and influence the culture of these communities for lasting transformation and continued discipleship.



KENYA, GHANA, NIGER, NIGERIA

CHURCH PLANTER TRAINING:

105 CHURCH PLANTERS

88 CHURCHES PLANTED

MEET TITILOYE, A NEW CHURCH PLANTER

Titiloye Aderonke of the Kwara region of Nigeria has had a life-changing experience.

As she explains it, “I realized that being a churchgoer does not guarantee salvation. A friend invited me to church, and I encountered Christ in that service. I began a deep relationship with my Savior, spending time with Him daily in devotion and the study of the Word of God. This has transformed my life.”



Now that she has experienced the life-changing power of Jesus, she has accepted the call to plant a church in the Agbe-Ola village, a community that consists mostly of Traditionalists (Nigerians who rely on oral tradition, magic, and traditional African medicine) and Muslims. There is no school or market in this village. Running water is scarce, and the access roads leading to the town are not suitable for most motorized vehicles.

Despite the adverse conditions, Titiloye is excited about the Lead Like Jesus training she will receive in preparation for the opportunity to bring the message of Jesus to this village of more than 2,000 people.

Titiloye is eager to share the Good News of Jesus that transformed her life and her leadership with individuals, families, and the village's political leaders.

Will you pray how the Lord might use you in helping to support church planters like Titiloye in her call? Your prayers and generous financial support will make it possible for church planters to receive the 18 months of training that will equip them to begin a ministry as a Church Planter and Agent of Community Transformation.

INTERNATIONAL EXPANSION IN CHURCH PLANTER TRAINING

The Lead Like Jesus church planter training program is set to expand into Uganda and Indonesia this year! Under this expanded program, those called to be church planters will receive instruction and mentoring, extending the reach of the Gospel and spreading the name of Jesus across these countries in an exciting way. Church planters are vessels God is using to transform whole communities for the sake of His name.

Church planter training involves creating the vision, mission, and culture necessary for church planters to lead village and community transformation through the leadership model of Jesus. There is a 3-month qualification and evaluation process for each church planter. The training also includes engaging and educating the sending church to make sure there is a spiritual commitment and some level of financial support for the church planter. The sending church must also be committed to the mission, vision, and values of the Lead Like Jesus ministry.

The church planter training program begins with the Encounter training experience and lasts 18 months. Each month, church planters meet to focus on a specific element of leadership development including vision-casting, evangelism, and discipleship.



WHAT'S SO SIGNIFICANT ABOUT THESE TWO COUNTRIES?

Uganda (officially the Republic of Uganda) is located in East Africa and borders 5 other countries: Kenya, Sudan, Rwanda, the Democratic Republic of Congo, and Tanzania. For many years, the leadership of Uganda terrorized its citizens, killing tens of thousands and abducting more than 25,000 children to become soldiers and sex slaves. The model of leading like Jesus is new to this culture.



Uganda



Indonesia

Situated in Southeast Asia, between the Indian and Pacific oceans, Indonesia (officially the Republic of Indonesia) is the world's largest island country, including over 17,000 islands. With more than 261 million people, it is the world's 4th most populous country, as well as the most populous Muslim-majority nation in the world. Imagine the impact that church planters leading like Jesus can have in this nation!

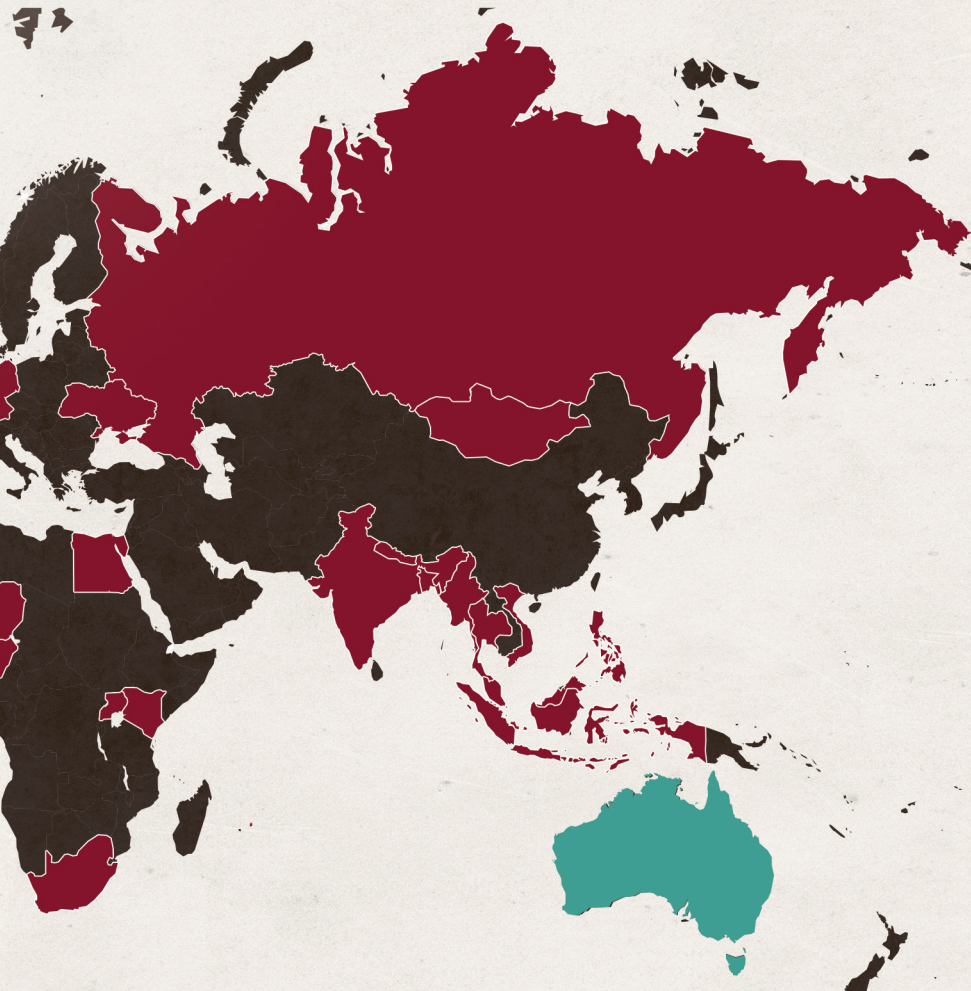


GLOBAL IMPACT



13,308
ADULT GLOBAL
ENCOUNTER
TRAININGS

*Total represents August 2018-June 2019 due to change in fiscal year.



■ Training locations:

■ Areas of opportunity:

- Bangladesh
- Bolivia
- Brazil
- Colombia
- Egypt
- Germany
- Ghana
- India
- Indonesia

- Kenya
- Malaysia
- Mauritius
- Myanmar
- Mongolia
- Nepal
- Niger
- Nigeria
- Philippines

- Russia
- Singapore
- South Africa
- Switzerland
- Thailand
- Uganda
- Ukraine
- United States
- Vietnam

- Australia
- Central America

HEART LANGUAGE FOR HEART TRANSFORMATION

The message of leading like Jesus creates the most impact when communicated in the native language of the audience. We are excited to now have the following available at www.LeadLikeJesus.com/store:

- Lidera como Jesus (Lead Like Jesus in Spanish)
- Un Lider como Jesus: Guia de estudio de seis semanas (Lead Like Jesus: 6-Week Study Guide in Spanish)

Other translations currently in progress:

- Kiswahili (African villages)
- Asante (African villages)
- Yoruba (African villages)
- French

Students Trained Globally

Last year, nearly 39,000 students around the world completed *Ignite*, a student-focused leadership development training program. Each participant is now equipped to impact his/her family, school, and village through teaching and modeling what it means to lead like Jesus.

How are Lead Like Jesus nationals able to provide *Ignite* training in schools and camps around the world?

In many cases, the sharing process begins with church planters who have established churches in villages, creating credibility and trust among the local residents. This in turn creates opportunities for introducing the teaching of Jesus as a leadership role model in schools.

According to Jim Montgomery, Chief International Officer for Lead Like Jesus, there are currently more than 300,000 students in Africa alone who have expressed interest in completing the *Ignite* training.

Imagine the impact 1 year from now if those 300,000 students could be trained to lead like Jesus!

38,925	STUDENTS TRAINED <i>through Lead Like Jesus student material, Ignite, in 2018-2019</i>
---------------	--

*Total represents January 2018-June 2019 due to change in fiscal year.

Here are testimonials from several students who have recently completed this training:

“Ignite has opened my eyes to see the in-depth meaning of leadership. Jesus is the first and foremost role model to emulate. My low self-esteem has disappeared; and now, I have built confidence in God to do things differently.”

—Chidogo Ibemesi, Ghana

“When I started the course, I thought I would collect some tips about the leadership of some generals or some methods about leadership to be successful. However, the thing I learned was the importance of humility. We have the choice of either Edging God Out or Exalting God Only....I would like to say thank you to Lead Like Jesus. They showed us that God’s love is the center point of everything in life.”

—Maria Thi Trang, Vietnam

“Thank you for motivating us to always lead like Jesus! Thank you for transforming my life personally. I kindly ask for you to train our neighboring schools. God bless you.”

—Osmondi Evans, Kenya

Please pray how God might use you to partner with Lead Like Jesus to help equip the 300,000 students who are waiting to be trained. For a \$100 donation, you can give 4 students the gift of *Ignite* training. All donations are tax-deductible and can be made online.



FORT WORTH: MORE THAN AN EVENT

A couple years ago, Dub and Dowell, two successful Christian businessmen in Fort Worth, Texas, participated in a Lead Like Jesus Founders' Weekend. They learned about LLJ's goal of using the teachings of Jesus to form the basis for leadership development. By the end of the weekend, they became donors to the LLJ ministry.

They later commented, "Phyllis' commitment to prayer, the morning devotions, and the worship times were the foundation for the [Founders'] weekend. The concepts of Lead Like Jesus rang true with our experiences...the effectiveness of Jesus-like leadership and the foibles of lording-over style of leadership."

But there was more.

"Our first thought," they said, "was to utilize the LLJ teaching for work in Rwanda; however, we soon realized the teaching was greatly needed here in the U.S.—and in Fort Worth, Texas."

Dub and Dowell traveled to Spartanburg, SC to become trained Encounter facilitators, and this year, they hosted their first Encounter training at Christ Church Chapel in Fort Worth.

Afterward, they said, "You could feel the presence of God when you walked in the room." They're already discussing plans to host more Encounters, providing additional church, business, and corporate leaders in the Fort Worth area with training on how to lead like Jesus.

In their words: "It is widely agreed that there must be a major leadership style shift if we are to adapt to the demands of the up and coming generation workforce. Lead Like Jesus is uniquely positioned to prepare company and organizational leadership to guide this style shift."

DOMESTIC

Organizations where we've provided training this year:

ADULT & TEEN CHALLENGE OF CENTRAL CANADA
BELLEFONTAINE FIRST UNITED METHODIST CHURCH
CARTIN COACHING
CATAWBA VALLEY BAPTIST ASSOCIATION
CRISTA
DOGWOOD CHURCH
FIRST CHRISTIAN CHURCH, JOHNSON CITY, TN
GENERAL COMMISSION UNITED METHODIST MEN
GREAT LAKES CHRISTIAN COLLEGE
GREATER ORLANDO BAPTIST ASSOCIATION
HINZESIGHT
HOPE POINT COMMUNITY CHURCH
HOUSTON'S FIRST BAPTIST CHURCH – DOWNTOWN CAMPUS
HUMAN CAPITAL GROUP, INC
IMPACT 360
JESUS MESSIAH EVANGELICAL FREE CHURCH
JONI & FRIENDS
LEADING WAYS
LIFESHAPE
MID ATLANTIC BAPTIST NETWORK
PIONEERS
PRINCE OF PEACE CATHOLIC CHURCH
ROCKFORD COUNTY JAIL
SENECA CREEK COMMUNITY CHURCH
ST. LOUIS METRO BAPTIST ASSOCIATION
TEEN CHALLENGE
THE BRIDGE CHURCH
WATER MISSION INTERNATIONAL
WORLD VISION
ZOE INTERNATIONAL

AND MANY MORE

Christ Church Chapel
—Ft. Worth, TX

RESOURCES HIGHLIGHTS

“Teaching them to observe all that I have commanded you...” Matthew 28:20

Every life touched, every workplace and community transformed, has been through Jesus and His leadership model.

LEADERSHIP ENCOUNTER EXPERIENCE

Peer-to-peer learning, the Leadership ENCOUNTER Experience is an interactive, personal workshop that challenges conventional leadership. Whether you lead a corporation, church or a family, the leadership model of Jesus will transform you and those around you.



BIBLICAL DISC® ASSESSMENT & CERTIFICATION

Biblical DISC® Assessment pairs insights from the DISC model of human behavior with examples of men and women in the Bible to help you leverage behavioral style differences in your professional and personal life.

If you desire to help others understand themselves better and use that knowledge to improve their personal and professional relationships, you can become a Certified Biblical DISC® Practitioner by participating in a 2-day certification or in our online certification.



BOOKS, STUDY GUIDES & ONLINE COURSES

Our books, study guides, and online courses guide individuals toward leading like Jesus by aligning the two internal domains (the heart and the head) and the two external domains (the hands and the habits).



YOUNG LEADERS

Young people are re-shaping cultures, churches, and workplaces. Lead Like Jesus senses a calling to influence today's youth by inspiring them to seek the Kingdom right where they are planted! Both individual and group resources are available in print and online.

OUR MISSION AND VISION

Lead Like Jesus' mission is to glorify God by inspiring and equipping people to lead like Jesus so that someday everyone, everywhere will be impacted by someone leading like Jesus.

SUPPORT THE MISSION

Give a tax-deductible donation:

- Online at LeadLikeJesus.com
- Mail your donation to 198 White Star Point, Spartanburg, SC 29301
- Donate stock by calling 800-383-6890

Lead Like Jesus is a proud member of the Evangelical Council for Financial Accountability (ECFA).

ECFA provides accreditation to leading Christian nonprofit organizations that faithfully demonstrate compliance with established standards for board governance, financial accountability, and fundraising/stewardship.



Enhancing Trust

**Learn how you can
partner with us at
www.LeadLikeJesus.com**



LEAD LIKE JESUS

198 White Star Point, Spartanburg, SC 29301
800.383.6890 | www.LeadLikeJesus.com

